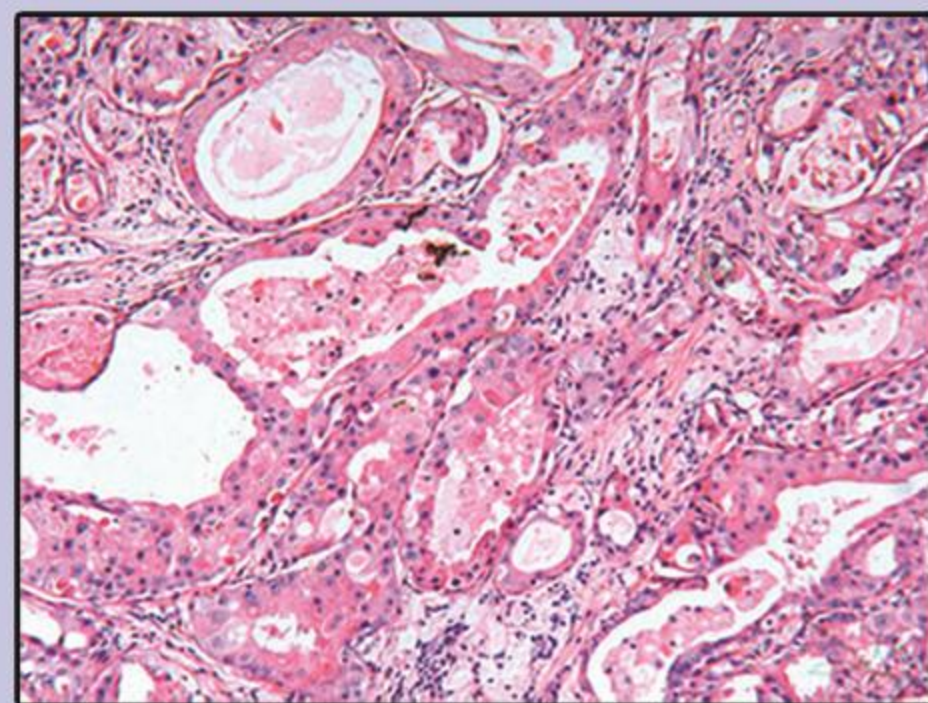
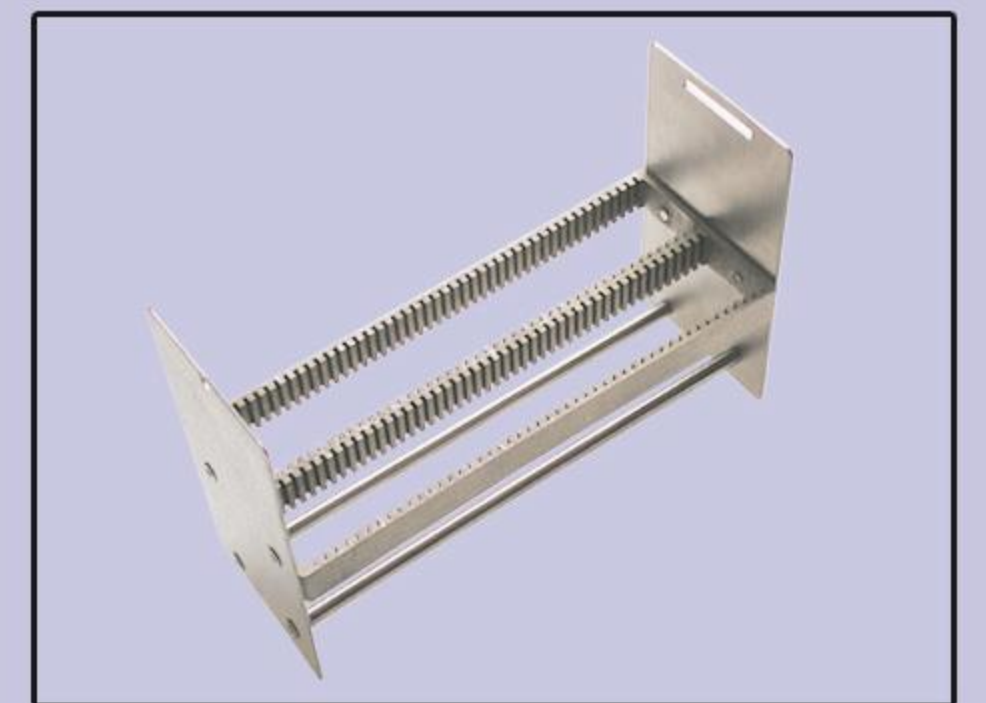


**H&E Staining**



**Pap Staining**



**Staining Rack**

# ASS190 Slide Stainer



# Main Features

- This model adopts microcomputer control technology, featuring an advanced intelligent control system.
- It can run two protocols simultaneously, with two slide racks, greatly enhancing work efficiency.
- It has flexible programming characteristics, allowing the system to start from any tank to any tank as needed, with up to 25 steps in between, to adapt to various processes and new process experiments.
- The system can store four groups (eight sets) of different protocols to meet users' requirements for processing different tissues, while also having a washing function.
- Sealed touch panel, reliable operation, dust-proof, and waterproof.
- Easy-to-operate control panel combined with a large LCD screen, displaying all control statuses on the screen for clear operation.
- Drip hanging function: When the slide rack is lifted from the liquid tank, there is a certain amount of liquid on the slide rack. Drip hanging allows the liquid on the slide rack to drip back into the lower tank, reducing the impact on the purity of the liquid in the next tank.
- Molded acrylic cover with sealing strip, double-layer activated carbon filtration, ensuring indoor air is not polluted.
- The system has comprehensive protection functions, preventing damage to the equipment even in case of abnormal situations or incorrect operations.
- It has an automatic positioning function, allowing the slide rack to automatically find the set position regardless of its position.
- With sound alarm function, the system can judge the operator's operation; for incorrect operations, the system will not execute them to allow operators to correct them.
- Second running function: If the machine encounters obstacles or the staining effect is not satisfactory during operation, users can insert any step to rerun it.
- Tank jam protection function, preventing tissue damage caused by tank jamming.
- It adopts a high-performance stepping motor motion system, running smoothly, with low noise, and accurate positioning.
- Y-axis transmission mechanism (specially optimized design), with smooth transmission, good working stability, and long service life.
- It has a flowing water washing function, equipped with inlet and outlet pipes, to achieve tissue washing function at any time.
- Streamlined appearance, easy to clean.
- Made of special plastic, the die-cast tanks are durable.

# Technical Parameters

| NO | Specification  | ASS 190  |
|----|--|--|
| 1  | Rated Voltage  | 220V AC ±10% / 110V AC ±10%  |
| 2  | Rated Frequency  | 50Hz / 60Hz  |
| 3  | Rated Input Power  | 120W   |
| 4  | Number of tanks  | 19 tanks (1st and 2nd tanks are cleaning tanks, with circulating water)  |
| 5  | Tank Volume  | 800ml  |
| 6  | Number of Slide Racks  | 2 (each rack can hold 48 slides)   |
| 7  | Disposable Processing Capacity   | 96 slides  |
| 8  | Stay Time per tank: 1 second to 99 minutes and 59 seconds, arbitrarily set |  |
| 9  | Drip Hanging Time (Tank Stop Time)   | 2-99 seconds optional, default value is 2 seconds.   |
| 10 | Stirring (Shaking Tank)  | The two slide racks shake alternately every 15 seconds, with a tank stirring interval of 5-30 seconds, adjustable, default shaking once every 15 seconds, with a shaking range of 5 millimeters. |
| 11 | Instrument Size (Length x Width x Height)                                  | 1235mm × 475mm × 590mm   |
| 12 | Instrument Weight (Net)  | Approximately 75kg   |

