

Tissue Processor

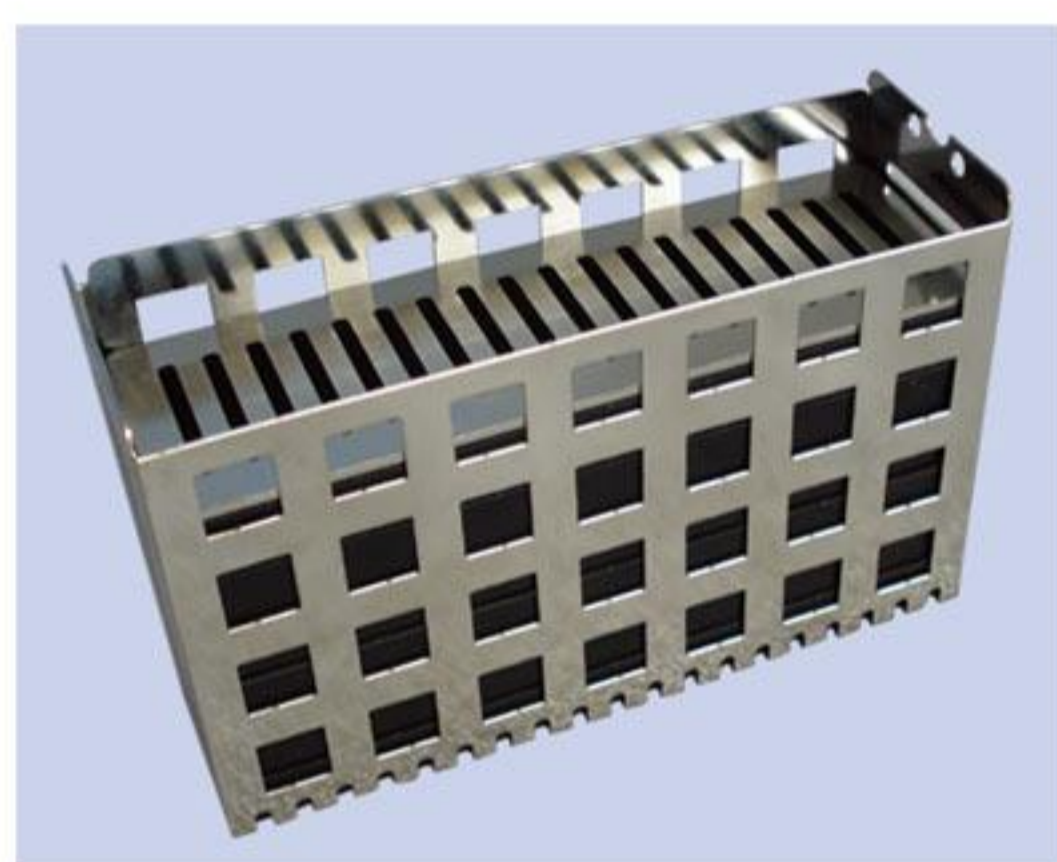
ATP 140 TISSUE PROCESSOR

BETTER HISTOLOGY SOLUTION BETTER LIFE FROM HEALTH

Characteristics

- Protecting samples from damages: The rack returns to the protection tank to avoid samples from damages if there were any contact between the rack and obstacles when moving into any reagent tank during operation.
- Self-adapted lids utilized with the multiple gasket seal offer the excellent sealing performance, which minimized the volatilization of reagents.
- The organic glass cover, sealing strips and double layer active carbon filter ensure no air contamination between laboratory and staining chambers.
- Delay function be activated automatically and the delay range from 0-48 hours.
- During processing procedure, the processing time can be adjusted by manual operation function on control panel .
- Re-run function: In case of “power off” or unsatisfied processing performance, the re-run function can start the re-processing procedure from a certain step .

Universal rack system



Rack



Open-flat grid



2X7 grid panel
for large tissues



3X10 grid panel
for small tissues

Technical Specifications

NO	Specification	ATP 140
1	Number of racks	2
2	Number of tanks	14 (10 reagent plastic tanks & 4 wax stainless steel tanks)
3	Number of stored programs	8 (4 groups)
4	Capacity of tank	1.3L
5	Number of samples in process one time	144 standard cassettes
6	Retention time in each tank	1 minute ~ 99 hours and 59 minutes
7	Agitation time in each tank	5 sec~30 sec adjustable (default value is 15 sec) Two baskets in turn every 5 minutes
8	Drip stay time	2 seconds~ 99 seconds , adjustable (default Value:20 sec)
9	Delay time	0~48 hours
10	Temperature range	55°C~70°C
11	Temperature tolerance	± 1°C
12	Power supply	220V±10%, 50Hz / 110V±10%, 60Hz
13	Max power	450 W
14	Dimensions (W×D×H)	1247×470 × 550 mm
15	Weight	about 75 KG

